



Cytochrome c1 Polyclonal Antibody

Catalog No	YP-Ab-00366
Isotype	IgG
Reactivity	Human;Mouse
Applications	WB; IF;ELISA
Gene Name	CYC1
Protein Name	Cytochrome c1 heme protein mitochondrial
Immunogen	The antiserum was produced against synthesized peptide derived from human CYC1. AA range:132-181
Specificity	Cytochrome c1 Polyclonal Antibody detects endogenous levels of Cytochrome c1 protein.
Formulation	Liquid in PBS containing 50% glycerol, 0.5% BSA and 0.02% sodium azide.
Source	Polyclonal, Rabbit,IgG
Purification	The antibody was affinity-purified from rabbit antiserum by affinity-chromatography using epitope-specific immunogen.
Dilution	WB 1:500-2000; IF/ICC 1:100-500;ELISA 1:5000-20000
Concentration	1 mg/ml
Purity	≥90%
Storage Stability	-20°C/1 year
Synonyms	CYC1; Cytochrome c1; heme protein, mitochondrial; Complex III subunit 4; Complex III subunit IV; Cytochrome b-c1 complex subunit 4; Ubiquinol-cytochrome-c reductase complex cytochrome c1 subunit; Cytochrome c-1
Observed Band	35kD
Cell Pathway	Mitochondrion inner membrane ; Single-pass membrane protein .
Tissue Specificity	Brain,Kidney,Lung,Skin,
Function	function:This is the heme-containing component of the cytochrome b-c1 complex, which accepts electrons from Rieske protein and transfers electrons to cytochrome c in the mitochondrial respiratory chain.,PTM:binds 1 heme group per subunit.,similarity:Belongs to the cytochrome c family.,subunit:The bc1 complex contains 11 subunits: 3 respiratory subunits (cytochrome b, cytochrome c1 and Rieske/UQCRC1/QCR1), 2 core proteins (UQCRC2/QCR2 and UQCRC3/QCR3) and 6 low-molecular weight proteins (UQCRC4/QCR4, UQCRC5/QCR5, UQCRC6/QCR6, UQCRC7/QCR7, UQCRC8/QCR8, UQCRC9/QCR9 and a cleavage product of Rieske/UQCRC1/QCR1).



Background

This gene encodes a subunit of the cytochrome bc1 complex, which plays an important role in the mitochondrial respiratory chain by transferring electrons from the Rieske iron-sulfur protein to cytochrome c. Mutations in this gene may cause mitochondrial complex III deficiency, nuclear type 6. [provided by RefSeq, Dec 2013],

matters needing attention

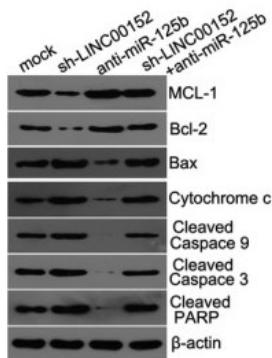
Avoid repeated freezing and thawing!

Usage suggestions

This product can be used in immunological reaction related experiments. For more information, please consult technical personnel.

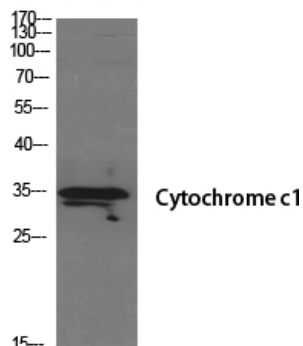
Products Images

A



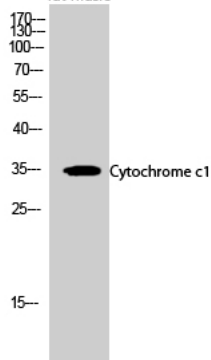
Chen, Puxiang, et al. "Long noncoding RNA LINC00152 promotes cell proliferation through competitively binding endogenous miR-125b with MCL-1 by regulating mitochondrial apoptosis pathways in ovarian cancer." *Cancer medicine* 7.9 (2018): 4530-4541.

rat-muscle

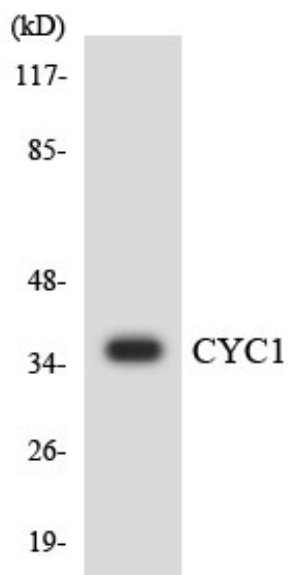


Western Blot analysis of various cells using Cytochrome c1 Polyclonal Antibody diluted at 1:500

rat-muscle



Western Blot analysis of rat-muscle cells using Cytochrome c1 Polyclonal Antibody diluted at 1:500



Western blot analysis of the lysates from HUVECcells using CYC1 antibody.